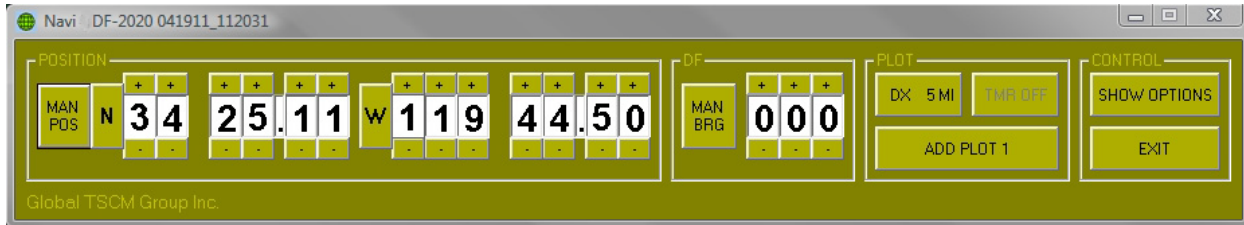


Navi DF-2020 DF Plotting Program

Operating Instructions



Introduction

Navi DF-2020 is a Windows program for plotting DF bearings on a map display, using the (very popular and free) **GoogleEarth** viewer program, available on the web. **Navi DF-2020** can plot up to 100 locations, and the DF bearing lines at those locations. Information can be entered manually using the control panel (shown above) or automatically from a **DF 2020** DF equipped with a (user-provided or purchased from us) GPS receiver.

Although the **GoogleEarth** viewer program normally uses an internet link to fetch satellite images for the display, it has been determined (by experiment) that it will run without such a link, provided that the area being viewed has been “pre-viewed” on the same computer... the map images are saved (cached) automatically in computer memory, (to accelerate the operation of the viewer) and these images are later “recalled” (automatically) whenever the viewer is operated without an internet link. This makes **Navi DF-2020** suitable for mobile operation, when an internet link probably won't be available.

To use **Navi DF-2020**, a copy of the **GoogleEarth** viewer program **must** also be installed on the same computer. **GoogleEarth** can be downloaded from this link;

www.earth.google.com

Users who are not familiar with **GoogleEarth** are encouraged to install and “play” with it for a while, to become acquainted with its major features. The information that follows provides enough guidance to use the basic features of **Navi DF-2020** with a **GoogleEarth** viewer, but the more you know, the more useful it becomes.

To learn Google Earth, please start here:

www.google.com/earth/learn/

Using the Program : A Tutorial Example

This tutorial demonstrates how to use the **Navi DF-2020** program with manual input of latitude, longitude and DF bearing data... you don't actually need any equipment. (this method is suitable for learning / instruction purposes)

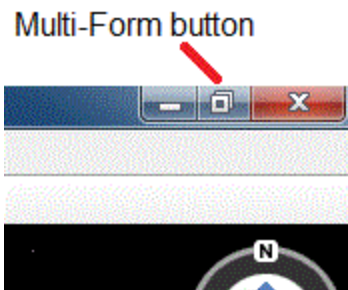
Because the **GoogleEarth** viewer and **Navi DF-2020** are separate programs, plotting information cannot be directly passed between them. Instead, **Navi DF-2020** creates a KML file in the **Navi DF-2020** folder, and the **GoogleEarth** viewer must be instructed to use this file, to generate the DF display.

The **GoogleEarth** viewer can be instructed to "reload" the KML file at regular time intervals (10 seconds in this example) so any changes in the KML file (created by **Navi DF-2020**) will be displayed in the viewer, after a brief delay.

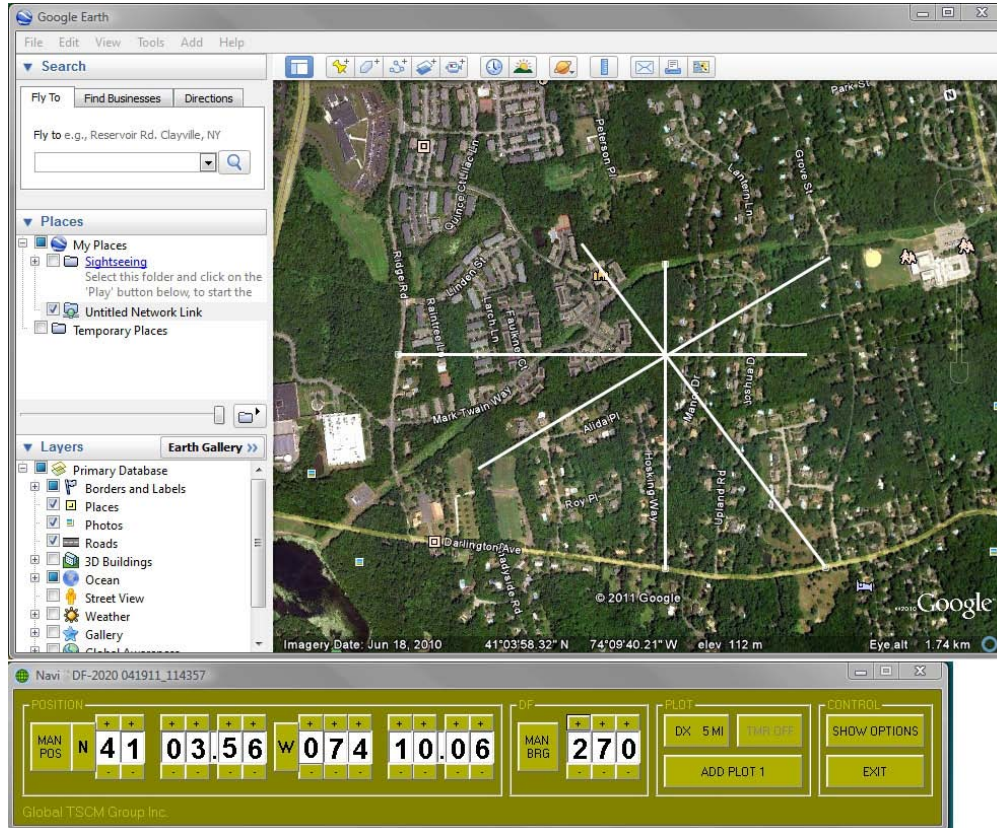
The procedure begins like this :

1. Start up the **GoogleEarth** viewer program
2. Start up **Navi DF-2020**

GoogleEarth normally starts up in "full screen" mode, but it can be switched into "sizeable" mode by clicking the "multi-form" button in the extreme top right corner of the display. This allows the size of the display to be adjusted by grabbing the display borders and moving them with the mouse. (click, drag and drop the borders)



Using this method, it is possible to display the **GoogleEarth** and **Navi DF-2020** panels at the same time, so that the user can quickly switch back-and-forth between the two programs. This is shown in the image on the following page. (**Navi DF-2020** is the green panel beneath the **GoogleEarth** screen)



Now to link **GoogleEarth** to the **Navi DF-200** KML file...

3. In **GoogleEarth**, on the top menu bar, click **ADD** and select **NETWORK LINK**. A new window will appear. (figures 1 and 2)

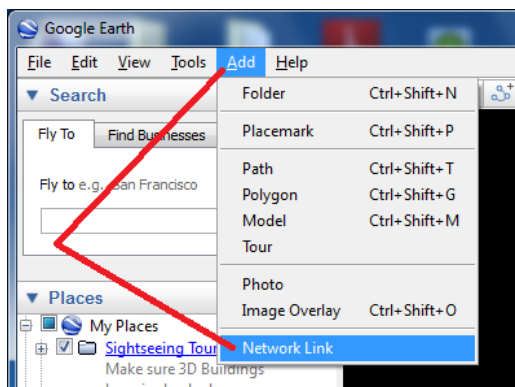


Figure 1

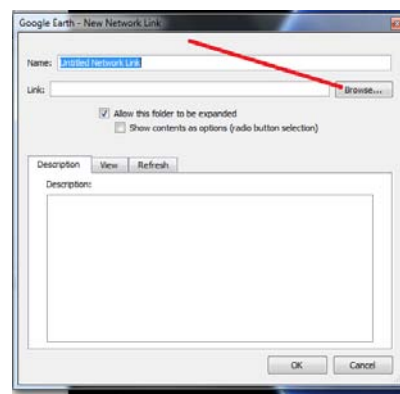


Figure 2

4. Click the **BROWSE** button to the right of the **LINK** BOX, (Figure 2) a directory window will appear. (figure 3) Navigate to the **Navi DF-200** folder (c:\NaviDDF) and open it, to select a file.

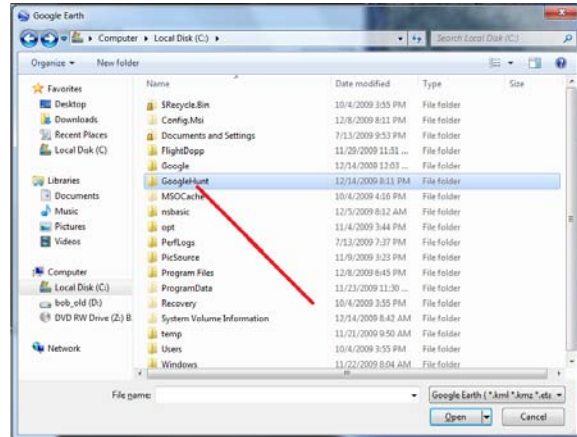


Figure 3

- Find the file named **Current_Hunt.kml** in the **GoogleEarth** directory window, and select it. (figure 4) Selecting this file will close the directory window in the **GoogleEarth** viewer.

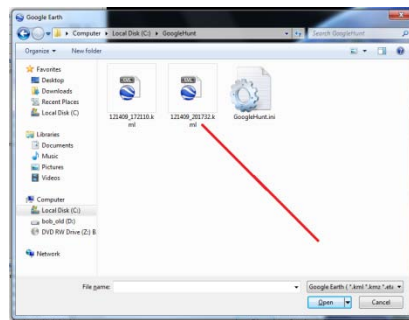


Figure 4

- In the bottom half of the remaining **GoogleEarth** screen are three “folders” with “tabs” named “Description”, “View” and “Refresh”. Select the “Refresh” tab. (figures 5 and 6)

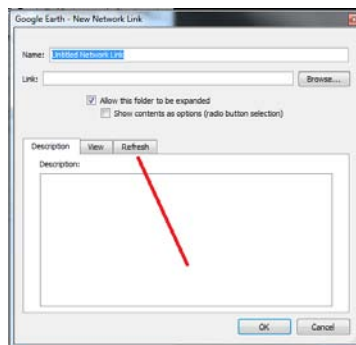


Figure 5

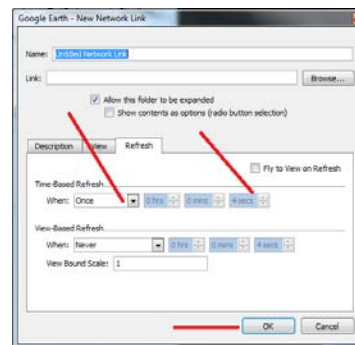


Figure 6

- In the “Time-Based Refresh” area, (figure 6) select “Periodically” from the drop-down menu.
- In the “Hours / Minutes / Seconds” windows, (figure 6) select “10 seconds”.

- Click the “OK” button to close the window. (figure 6)

At this point, the **GoogleEarth** viewer is linked to the **Navi DF-2020** KML file, and it will “refresh” every 10 seconds, using information in the KML file.

Now to generate the first DF plot on the display... (manual input method) Refer to figure 7 for location of the controls.

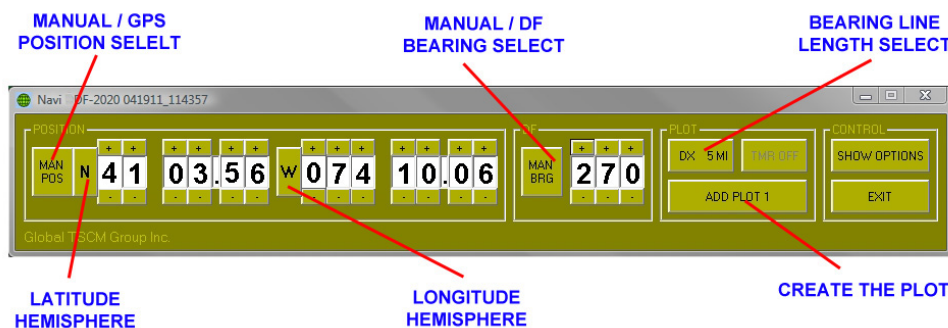


Figure 7

- In the **Navi DF-2020** control window, in the POSITION frame, verify the latitude and longitude information comes from the MANUAL POSITION inputs. (button caption will read “MAN POS” instead of “GPS POS”) If necessary, click the button to change it to “MAN POS”. This enables the UP / DOWN buttons located above / below each digit of the position display.
- Enter the latitude and longitude of the location where you want the first plot to be displayed. The individual digits can be increment / decremented by clicking the buttons above / below each digit. Latitude and longitude must be expressed in degrees, minutes and decimal minutes. Be sure also to get the “hemispheres” correct. (N or S for latitude, E or W for longitude)
- In the DF frame, verify the DF bearing source comes from the MANUAL BEARING input. (button caption will read “MAN BRG” instead of “DF BRG”) If necessary, click the button to change it to “MAN BRG”. This enables the UP / DOWN buttons above / below each digit of the bearing display.
- Enter the DF bearing (expressed in true degrees) for the radial line that will be “drawn” on the display, for this lat/long location.
- Select the desired length of the radial line, (in miles) by clicking the DX button until you see the desired length. (0 miles, 1 mile, 2 miles, 5 miles, 10 miles, 20 miles or 50 miles)
- When all the information has now been inserted, it is the time to generate the plot. This can be done by clicking the “ADD PLOT” button, but it can also be done by pressing the SPACE BAR on the keyboard. (more convenient for mobile operations)



Global TSCM Group, Inc.

12 W 32nd St, Suite 604, New York, NY 10001, USA
<http://globaltscmgroup-usa.com> sales@globaltscmgroup-usa.com
Tel.: +1 212 967 4030 +1 646 233 0383 Fax: +1 212 967 7560

THE STEALTH
The Confidential Catch

The ADD PLOT button will “turn white” for 3 seconds, to indicate that a plot is being generated. After that, the caption on the ADD PLOT button will change (increment) to indicate the number of the next plot to be generated. If an audio device is enabled, the computer will briefly “beep” to indicate the plot was generated.

A few seconds later, (10 seconds or less) the plot will appear on the **GoogleEarth** viewer, and each plot has a “name” consisting of the exact (computer) time when that plot was generated.

NOTE : The SPACE BAR trigger will ONLY work if the **Navi DF-2020** program window has been active on the computer. If clicking the mouse (for any reason) on some other program or area located OUTSIDE the **Navi DF-2020** control window will direct the keyboard output to somewhere else, and the SPACE BAR trigger won't work anymore. You can restore the SPACE BAR trigger by clicking the mouse anywhere INSIDE the **Navi DF-2020** control window.

To generate more plots (up to 100 are allowed), repeat steps 10 to 15 for each new plot desired. Each time a new plot is generated, the caption on the ADD PLOT button will increment, to indicate the number of the NEXT plot that will be generated.

Using an External GPS for Automatic Position Data Input

Navi DF-2020 has provisions for accepting lat/long information from an external GPS unit, provided that the GPS can generate NMEA GPRMC messages that can be fed to a COM port on the computer. (GPRMC is very common)

COM ports are (by definition) RS232 ports, and some computers these days provide only USB ports. A GPS with RS232 output can often be adapted to a USB port, by means of an RS232/USB adapter module. These adapters come with driver software that must be installed on the host computer. The adapter and software “disguises” the USB port (makes it look and behave like a regular COM port) and allows **Navi DF-2020** to access the GPS data.

Assuming a GPS unit has been successfully connected to the host computer, and it is running properly, (GPS = turned on, satellites have been acquired and it is generating valid GPRMC position messages) then the GPS source can be used to drive **Navi DF-2020**, by the following method :

1. Startup the **Navi DF-2020** program.
2. Click the SHOW OPTIONS button. A new screen will appear where you can select the COM port. (figure 8)

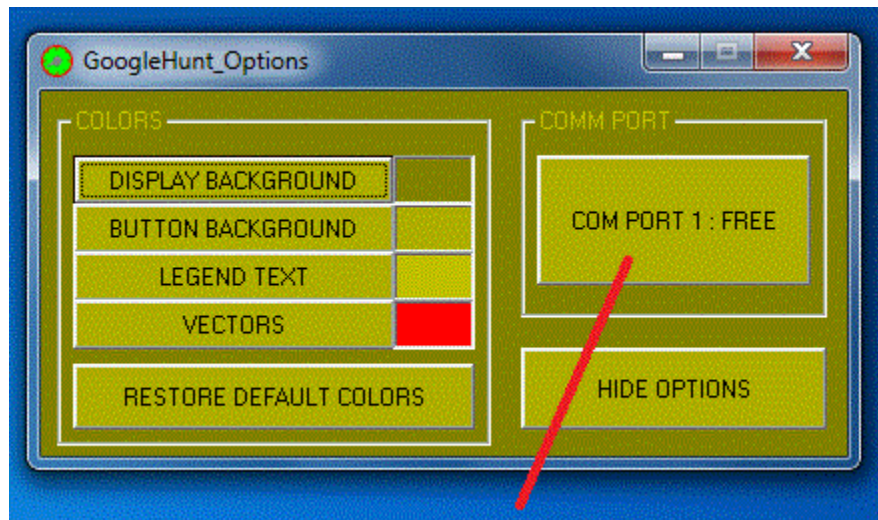


Figure 8

3. Click the COM PORT button until you find the proper COM port being used by your GPS unit. (they are numbered 1 through 8)

Each time you click the button, the COM port is briefly tested to see if it truly is installed on your computer, and if it is “available for use”. If not, the button caption will read “COM PORT x : BUSY” and the button color will change to grey. If the COM port is available, it will read “COM PORT x : FREE” and the button color will be normal. (same as all the other buttons)



Global TSCM Group, Inc.

12 W 32nd St, Suite 604, New York, NY 10001, USA
<http://globaltscmgroupp-usa.com> sales@globaltscmgroupp-usa.com
Tel.: +1 212 967 4030 +1 646 233 0383 Fax: +1 212 967 7560

THE STEALTH
The Confidential Catch

4. On the **Navi DF-2020** control panel, switch the position source from MAN to GPS, so that the lat / long data will come from the GPS unit. This will “grey out” the UP / DOWN buttons above / below each digit, since they are now disabled.
5. Verify that you have selected the proper COM port by watching the latitude / longitude display on the **Navi DF-2020** panel... if everything is running properly, the display will show the exact same lat/long values as the GPS unit.

If **Navi DF-2020** fails to detect a valid GPRMC message, then after 10 seconds the display will “blank out” and show “dashes” in all the digit windows. If this happens, possibly you have selected the wrong COM port to drive **Navi DF-2020**... try another.

6. Once you have verified that the GPS is driving **Navi DF-2020**, close the OPTIONS window by clicking the HIDE OPTIONS button.

Once the proper COM port has been identified, the setting is saved to disk when the program is closed, so that the same COM port will (automatically) be selected, the next time **Navi DF-2020** starts up. If the COM port is not available when **Navi DF-2020** starts up (reason = any) you will get an error message to warn you about the problem.



Global TSCM Group, Inc.

12 W 32nd St, Suite 604, New York, NY 10001, USA
<http://globaltscmgroup-usa.com> sales@globaltscmgroup-usa.com
Tel.: +1 212 967 4030 +1 646 233 0383 Fax: +1 212 967 7560

THE STEALTH
The Confidential Catch

Using an External Agrello Format DF for Automatic Bearing Data Input

An external Doppler DF can be used to automatically provide the DF bearing data, if the DF generates an RS232 output of Agrello format DF messages, at 4800 baud.

A GPS input *is required for this mode of operation*, since DF units generate “relative” bearings and **Navi DF-2020** requires “true bearings” to plot the lines on the display. GPS information is required to convert “relative” bearings to “true” bearings. Furthermore, the indicated GPS “speed” must be 3 knots or greater, to ensure the heading data from the GPS is trustworthy.

The DF messages must be applied to the same COM port used by the GPS, so it might be necessary to contrive a switch, to select back-and-forth between the GPS and the DF, as desired.

The **DF 2020** DF does this “switching” automatically... (shameless self-promotion) it has a GPS RS232 input, to accept GPS messages. It searches for GPRMC messages from the GPS and “relays” every 3rd GPRMC message through its own RS232 output port. If DF messages are available during the time between GPS messages, they will be sent out using the same port. As a result, no manual switching between the DF and the GPS is required.

To select an external Agrello format DF as the bearing source, click the DF SOURCE button so the caption says “DF BRG”. (Instead of “MAN BRG”)

NOTE : If no DF messages are detected for 10 seconds, the DF bearing window will “dash out” to indicate that no valid DF data is available for plotting. In this condition, if you force a plot to be generated, (hit the space bar or click the “ADD PLOT” button) the plot will contain a location marker, but no DF bearing line will be painted.

NOTE : **Navi DF-2020** assumes the DF bearings are “relative bearings”, which must be corrected to “true bearings” using COURSE information from the GPS. This is done automatically, before the bearing lines are plotted on the display. When operated with automatic DF input, (button caption = “DF BRG”) the loss of GPS information (for 10 seconds or more) will therefore prevent a DF line from being plotted... the DF bearing display will also “dash out”, since it is impossible to calculate the true bearings without valid GPS COURSE information.

NOTE : GPS heading information is not reliable for vehicle speeds below 3 MPH... therefore, **Navi DF-2020** checks the GPS speed when using an external DF input, and it will fail to generate a bearing line (on a plot) if the GPS speed is less than 3 MPH. (vehicle is stationary) In this case, the DF display will show the letters “SPD”, to indicate the problem.



Global TSCM Group, Inc.

12 W 32nd St, Suite 604, New York, NY 10001, USA
<http://globaltscmgroup-usa.com> sales@globaltscmgroup-usa.com
Tel.: +1 212 967 4030 +1 646 233 0383 Fax: +1 212 967 7560

THE STEALTH
The Confidential Catch

Using The Automatic Timer to Generate Timed Plots

Navi DF-2020 has an automatic timer that can be enabled whenever GPS is selected as the POS source. The TIMER button is normally disabled, (for MAN POS) and the background color for the button is grey, to indicate this. Selecting GPS as a POS source will enable the TIMER button.

The TIMER causes **Navi DF-2020** to automatically generate plots of GPS position and DF bearings at regular time intervals. Time intervals can be selected for 1 minute, 2 minutes, 5 minutes and 10 minutes, as well as "TIMER OFF" which disabled automatic plotting.

If GPS data is not valid when the time comes to generate a plot, no plot will be generated. Similarly, if DF data is not valid when the time comes to generate a plot, no DF bearing line will be plotted. (but the location WILL be plotted IF GPS data is valid) GPS and DF data becomes invalid 10 seconds after the last GPS and/or DF message was received.

This feature can be troublesome if used on a channel where multiple transmitters are conducting a conversation... if the time comes for a plot, and the channel is occupied by a signal that is NOT coming from the transmitter being hunted, the **Navi DF-2020** program will still plot the bearing line... (it can't tell the difference between transmitters)

Obviously, this can lead to a display that is cluttered with many "false" bearing lines, after a while. In situations like this, it is better to NOT use the timer, and (manually) "forcing" plots to be generated by hitting the spacebar or "ADD PLOT" button, whenever the hunted transmitter comes on the air. (the hunter must supervise the plotting process)

Timed plots might be useful in situations where the hunter is seeking an "accidental" signal on a channel, like a stuck mike button... situations where the only signal on the channel is the signal being hunted.

In cases like this, especially when the hunter is hunting "solo", the **Navi DF-2020** program can be allowed to run (without manual supervision) for some time interval, accumulating data while the hunter pays due attention to the road, and driving the vehicle... the results can be safely viewed anytime later, when the vehicle is parked.

Using The Saved Google Earth Map without Internet Availability

If you expect to use your DF2020 in the certain area where any internet is not available for Google Earth, you can search the area with internet and save it in "My Places" for later DF hunting on the saved map

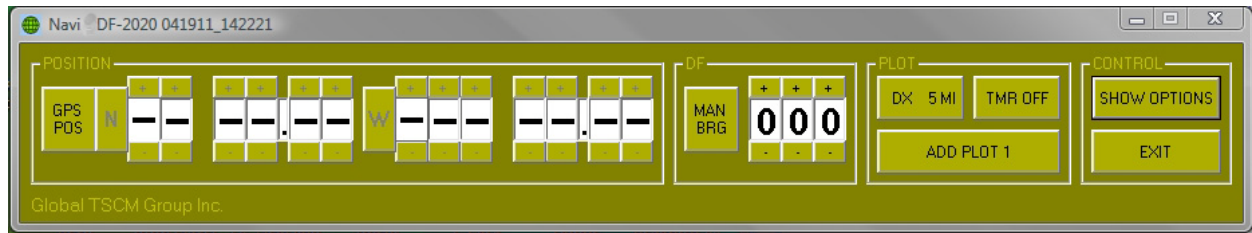
1. Search an area with internet connection and adjust its scale desired.
2. Save the map in "My Places" with the desired name.
3. Repeat this procedure as many as you need.
4. Start "Google Earth" when you need for DF hunting and double click the saved map you need.
5. Start "Navi2020" to begin bearings.

The appearance and specifications can be changed without ant notification for the purpose of upgrade product.

Warning / Error Messages

There are a few warning / error messages in **Navi DF-2020**, but not many...

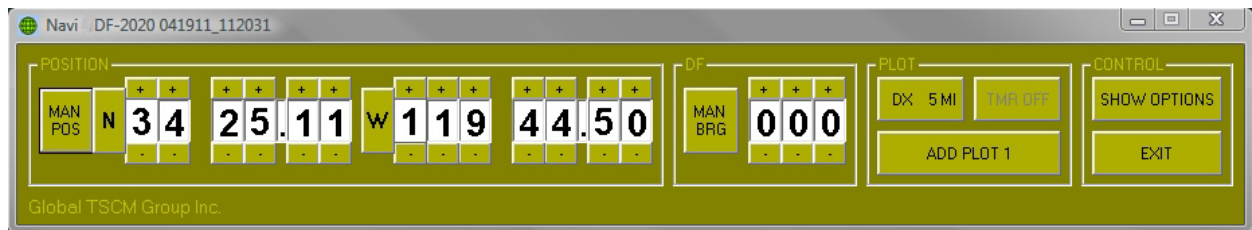
If there is some kind of problem with data from an external GPS or DF, the digits will show “dash” characters instead of digits. This indicates that no valid messages have been received in the last 10 seconds.



In the case of GPS messages, these “dash” displays might also indicate that the GPS is turned on and properly connected, but the receiver has not yet acquired enough satellites signal to get a reliable position to fix the GPS messages contain a status indicator, and if this indicator states the navigation data is not reliable, the **Navi DF-2020** lat/long display will show “dashes”

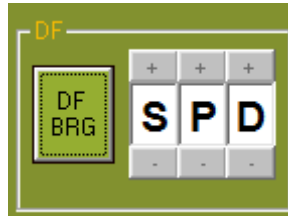
The display will also show dashes if it cannot detect a GPRMC “sentence” coming from the GPS... these particular sentences are the most common of all GPS sentences, but they are not “mandatory”, and therefore might be “missing” from some GPS units.

The DF display will show “dash” characters for two reasons... first, if GPS data is not available, because the DF routines cannot calculate the DF bearing, expressed in “true degrees”. (GPS heading information is required for that)

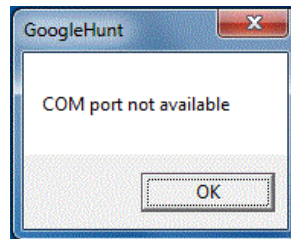


The DF display will also show “dash” characters if no valid DF messages have been detected in 10 seconds. This can happen if there is no signal on the channel.

There is a third warning message that displays in the DF digit windows. If the DF displays the letters “SPD” (instead of digits) it indicates the GPS-measured speed is less than 3 knots. Under these conditions, a GPS heading is not reliable and might contain large errors. Therefore it is not suitable for converting a DF “relative bearing” into a “true bearing”, for display and plotting by **Navi DF-2020**.



One last warning message involves problems with the COM port, and it appears whenever the software attempts to open up the COM port. If any error is detected, the following message box will appear :



This message can appear immediately after the program starts because the program “tests” the COM port when the program begins, to ensure it really is available. If the COM port is not available, this message box will appear. This can occur if the program attempts to open a COM port that is already open, or attempts to close a COM port that is already closed.

For example, if some other program (not related to **Navi DF-2020**) is using the same COM port when **Navi DF-2020** is started, this error message box can appear.

Accumulating Maps in the Cache Memory

In order to get map images with sufficient detail to show street names, the “eye elevation” in the **GoogleEarth** viewer must be around 5000 feet. At this altitude, the screen displays an area approx. 0.75 miles high by 1.0 miles wide.

To display an area the size of Los Angeles requires an eye elevation of 50 miles, which displays an area measuring 40 miles high by 60 miles wide. (2400 square miles) Therefore, about 3200 images (0.75 x 1.0 miles) are required to cover an area the size of Los Angeles, with sufficient detail to show street names.

At this time, the only way known to accumulate these maps is to “fly over” these areas (with the **GoogleEarth** viewer) at an altitude of 5000 feet, slowly covering the area desired. This can take a fair bit of time, but it should only be necessary to do it once. Be sure to have ROADS checked in the LAYERS list box, to accumulate the road names as well.

If these “high-resolution” images are not available, the viewer will continue to operate but the images will be “blurry” if “zoomed in” to view small details... they just aren’t available with images taken at higher elevations.

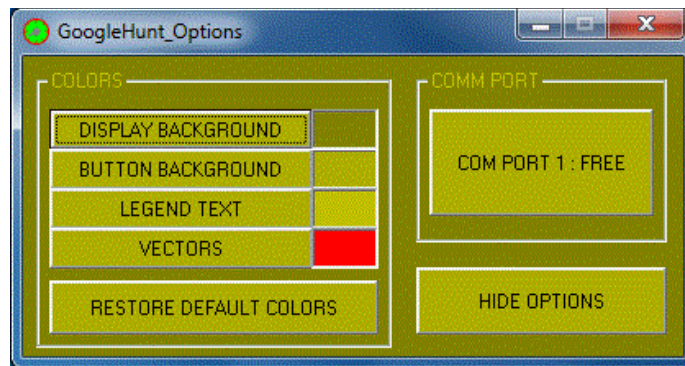
Changing the Color Scheme

The color scheme for **Navi DF-2020** can be changed to suit your taste, or improve visibility of the controls... for example, nighttime viewing might be better with a darker color scheme, to reduce screen glare.

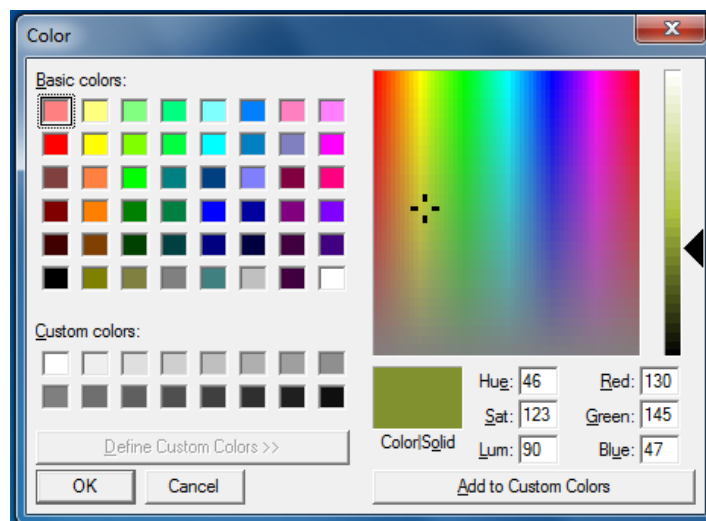
There are four user-adjustable colors in **Navi DF-2020**

- Display background
- Button background
- Legend text (captions)
- Vector color (for bearing lines on the display)

To adjust these colors, start up **Navi DF-2020** and click the SHOW OPTIONS button. A second screen will appear.



To adjust the background color, click the DISPLAY BACKGROUND button, a “color dialog” box will appear.



You can select any of the 64 colors in the “library” called “basic colors”, or use the crosshairs and vertical slider, to set the color yourself. Moving the crosshairs left or right will change the color itself. (

The appearance and specifications can be changed without ant notification for the purpose of upgrade product.



Global TSCM Group, Inc.

12 W 32nd St, Suite 604, New York, NY 10001, USA
<http://globaltscmgroup-usa.com> sales@globaltscmgroup-usa.com
Tel.: +1 212 967 4030 +1 646 233 0383 Fax: +1 212 967 7560

THE STEALTH
The Confidential Catch

“hue”) Moving the crosshairs up or down will change the intensity of the color from bright to soft, (“saturation”) by mixing the color with white. The slider control sets the total brightness (“luminosity”) by mixing the color with black.

Clicking a “library color” will drive the crosshairs and slider to the values associated with that color... so if you see a “library color” that is close to the color you want, you can select it to provide “starting point” values that you can fine-tune yourself with the crosshairs and slider.

Once you have the color you want, click the OK button, the new color will be instantly applied to the background. The same procedure is used for the other two colors.

If you want to restore the original color scheme, click the DEFAULT COLORS button.

The colors are saved to disk when the program is shut down, and restored automatically upon restart.

More Information

There is **NO ASSOCIATION OR COLLABORATION** between **GoogleEarth Corporation** of Palo Alto California, USA (creator of **Google Earth**) and **Radio DF Instrument** New York, New York, USA. (distributor of **Navi DF-2020**). The name for **Navi DF-2020** derives ONLY and EXCLUSIVELY from the fact that **GoogleEarth** is used as a “viewer” program for the output of **Navi DF-2020**.

Therefore, for any problems, questions or more information about **Navi DF-2020**, please contact us (by e-mail :

Kn2c@kn2c.us

The **Navi DF-2020** output file (which is read by the **GoogleEarth** viewer) is actually a “KML” file which is a readable “text” file. (very similar to HTML, you can view it with WordPad)

The KML “language” is optimized for use with mapping programs. Information about the KML “language” is available on the web.

Navi DF-2020 was created using VisualBasic 6 on a Windows7 machine in December 2009.